

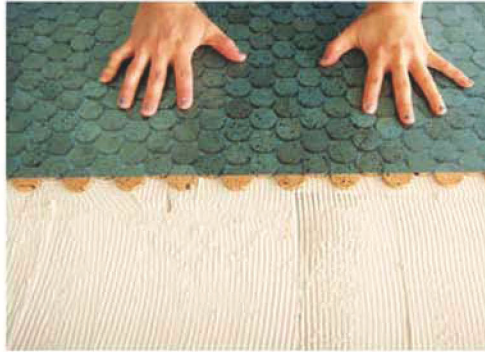
# Cork Mosaic BY THE HABITUS COLLECTION

## INSTALLATION INSTRUCTION FOR CORK MOSAIC TILE PRE-FINISHED INCLUDING SOLID COLORS, AND COLOR MIXES. (NOT NATURAL FINISH)

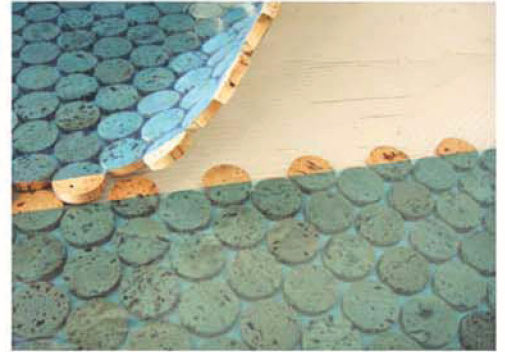
Habitus Cork Mosaic Tile is installed in a manner similar to typical ceramic or glass mosaic tiles, glue then grout method. Please note the existing substrate should be clean & level. It is necessary to remove any old vinyl tiles, old adhesives, loose or weak concrete, dirt, debris and any other contaminant that could impact the bonding of the Cork Mosaic.



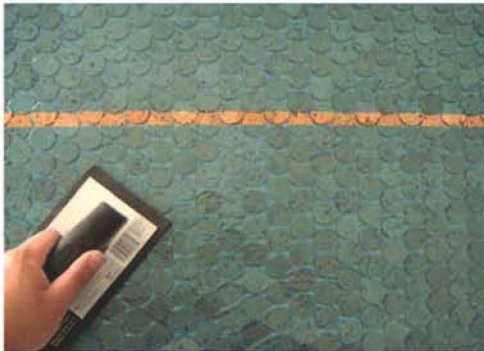
**STEP 1:** Apply a uniform layer of tile adhesive using a V-notch trowel (3 mm)  
Note: most common thin-set mortar adhesives are suitable for Cork Mosaic.  
(i.e. Mapei, Custom, Laticrete, Litikol)



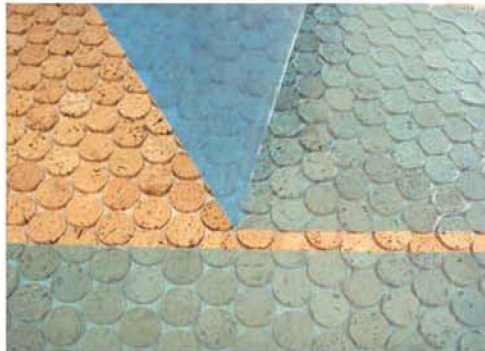
**STEP 2:** Sheets are face-mounted.  
Carefully place the Cork Mosaic with the plastic sheet facing upwards, contacting the backside of the sheet to the adhesive surface.



**STEP 3:** Interlock and align each Cork Mosaic sheet carefully next to one another. The material can be easily cut and shaped using a utility knife.



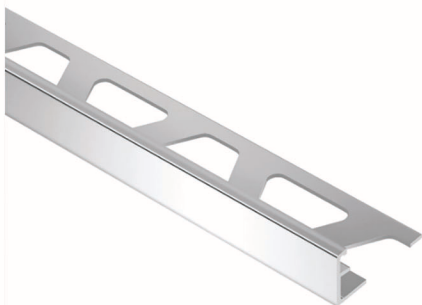
**STEP 4:** Using a rubber trowel firmly press against all areas of each Cork Mosaic sheet. This is important to obtain proper contact of the material and adhesive surface.



**STEP 5:** Following adhesive instructions, and once fully dry. Carefully begin to peel off and away the plastic face mounting and discard. If necessary, re-attach any loose cork chips manually.



**STEP 6:** Finalize the installation and using a high quality rubber trowel, apply tile grout. We recommend the use of a polymer modified sanded grout or premixed quartz or urethane.  
(Mapei, Laticrete, Bostik Trucolor, Custom Fusion or Litikol)



**FOR CORNERS & OUTSIDE EDGES;**  
Use Tile Edging or Tile Profiles, available from Schluter Systems.

**CAUTION:** In order to avoid grout haze, do not leave grout to dry on the surface for a long period of time. It may become difficult to remove. Its best to apply and wipe the grout excess promptly and continuously. Working in small areas is best.

**Maintenance:** It is recommended that you sweep, vacuum or dry mop on a regular basis. For stubborn dirt or debris, the use of a damp mop with neutral or mild detergent can be used. Such as a small amount of dish washing liquid with water. The infrequent use of a floor polisher liquid (such as Bona Floor Polish) is recommended in traffic or wear patterns depending on the luster and performance of the finish.

**Re-sealing:** depending on wear and performance, the re-application of the polyurethane sealer may be required. Questions? Call us 1-800-729-5120 or [info@habituscollection.com](mailto:info@habituscollection.com)